



asçelik

Steel Casting Foundry

# History

- **1956**

Started steel casting as a small casting shop as a family business.

- **1995**

Took the name of As Çelik and started to export to Europe

- **2007**

Company management passed to the third generation of the family.



# As Çelik with Numbers



450 Employees



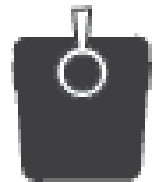
3 Shifts / 6 days of week



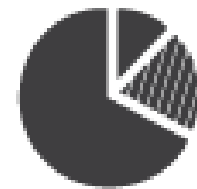
2 Facilities in Samsun TURKEY  
120.000 m<sup>2</sup> total terrain



Casting capacity up to  
50 tones for a single  
part



35.000 tones casting  
capacity / year



The biggest  
manganese steel  
producer in Europe



95%  
Deliver on time





# Facilities



As Çelik Central Foundry in Tekkeköy and the second foundry in Kavak are 50km away from each other.





# Financial Facts



## TURKEY'S SECOND TOP 500 INDUSTRIAL ENTERPRISES 2020

As Çelik is in the list of «Turkey's Second Top 500 Industrial Enterprises 2020» with total turnover.

**€37 Million**  
Turnover in 2020





80%

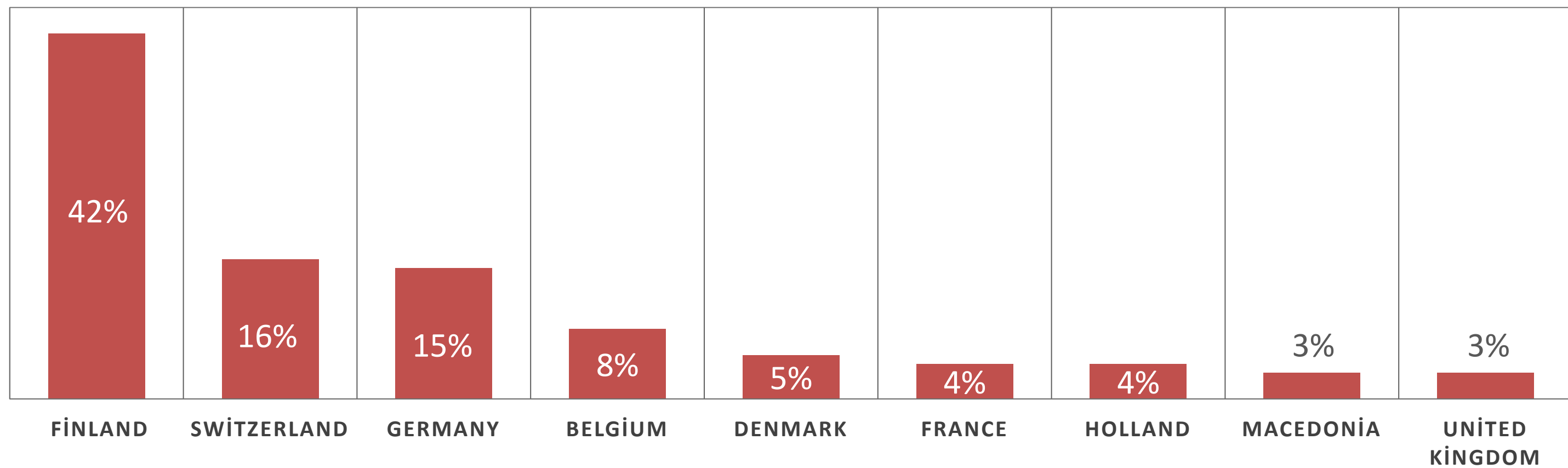
Exporting of total profuction to  
EU Countries

## Export Rate



As Çelik is in the list of “Top 1000 Export Companies of  
Turkey» for more than 10 years.

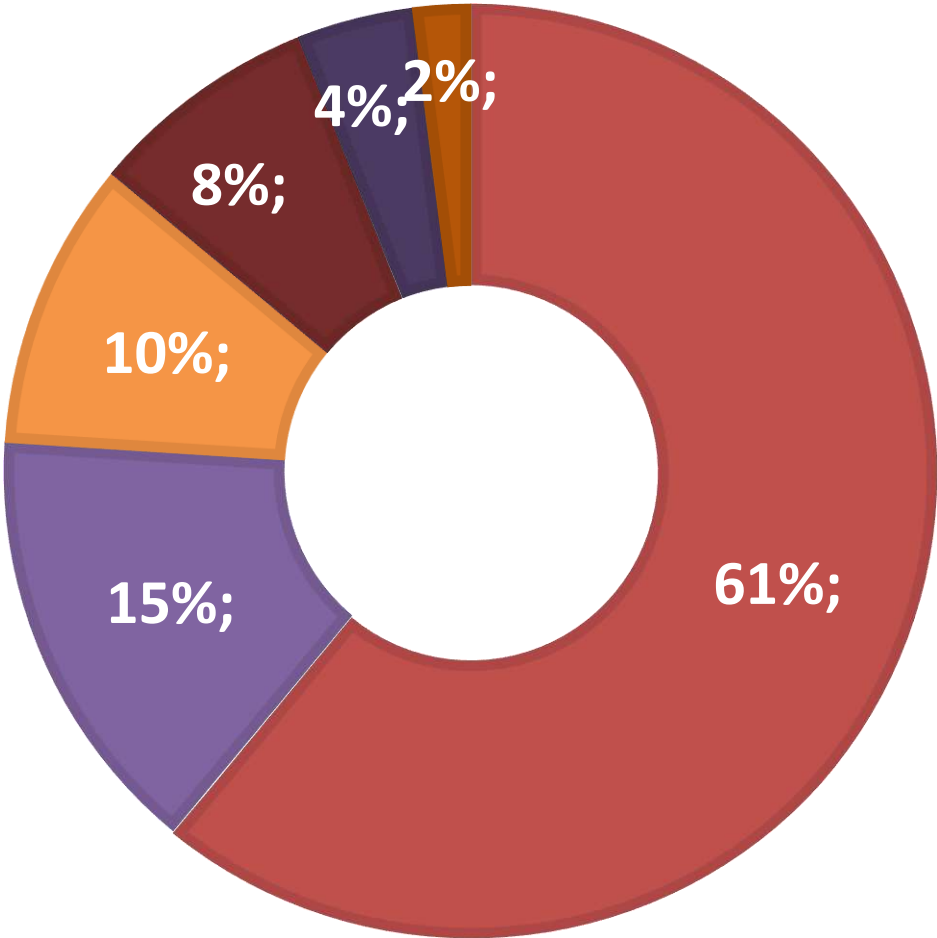
# Export Figures



# Production Scale

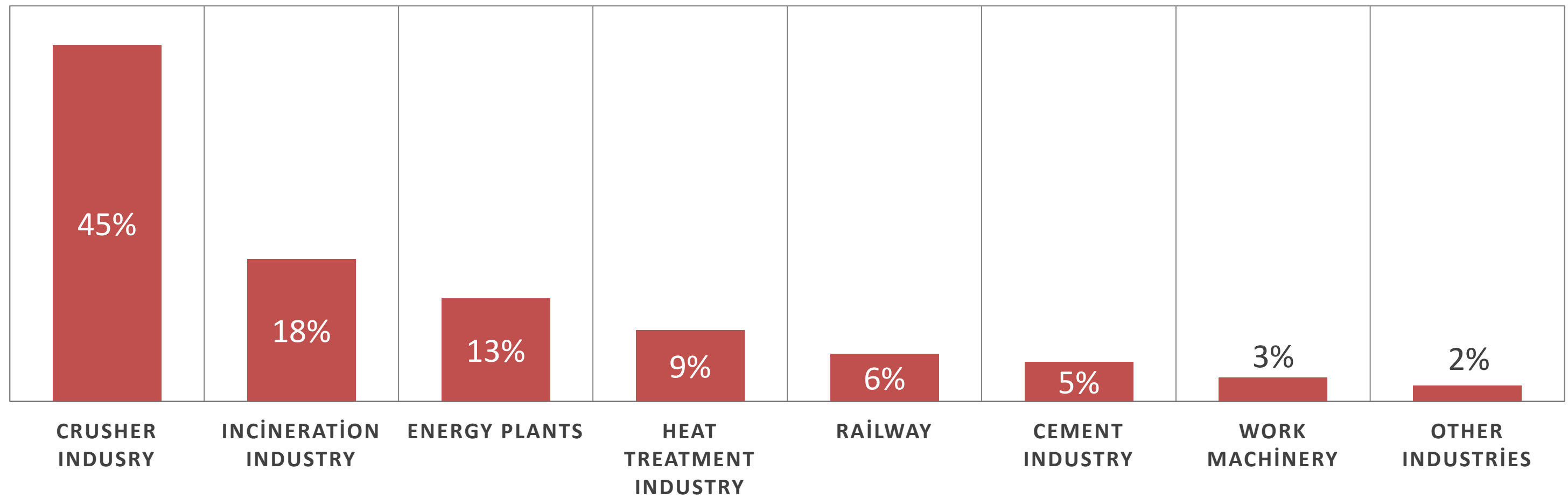


- 1. Manganese Steel
- 2. Stainless Steel
- 3. Carbon Steels
- 4. Low Alloyed Steels
- 5. Cr-Mo Steels
- 6. Other Casting





# Customer Scale



A black and white photograph of an industrial setting, likely a foundry or casting plant. In the center, a bright, glowing circular opening emits a large amount of white steam or smoke. To the left, there are dark, silhouetted structures and some sparks or flames at the bottom. The overall atmosphere is dark and industrial.

## Production Sites

**WE DO NOT  
OUTSOURCE**

Study and Project

Pattern Shop

Molding Lines

Core Shop

Casting Lines

Heat Treatment

Machining Shop

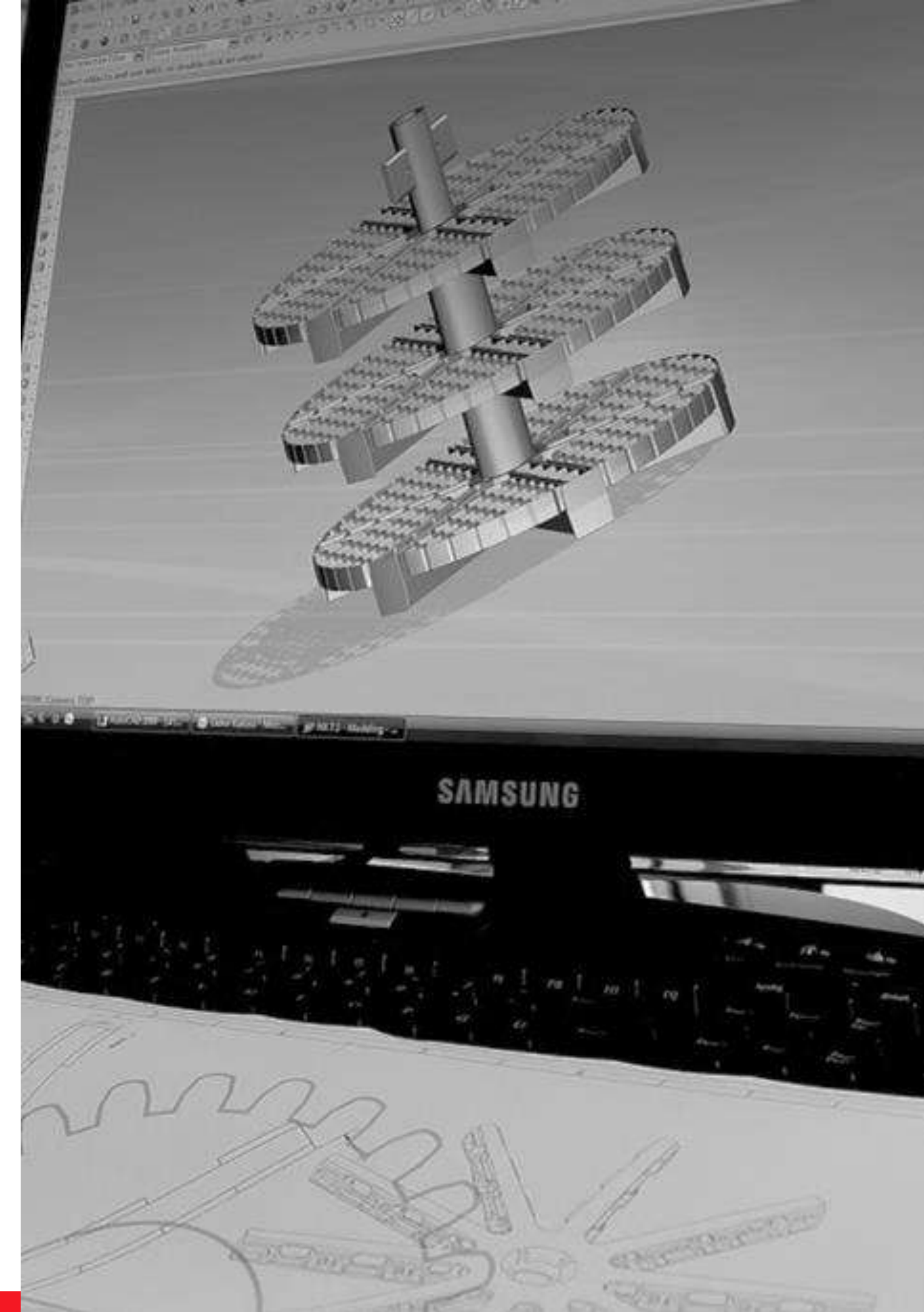
Quality Control

Packing & Delivery



# Study / Project / R&D

- 3D Modelling by UniGraphics
- Special designs according to customer needs
- CAM datas for CNC Machining
- Raw datas for casting simulation
- Casting Simulation by Nova Solid and Magma at the same time
- Improvement in casting design
- Prevention of possible defects throughout the casting



# Pattern Shop

- 17 employees
- Pattern manufacturing with 3 different materials  
(Wood, Araldite & Aluminium)
- 5 CNCs in charge for pattern
- Pattern revision
- Storage of patterns (free of charge)
- Insurance against natural disasters





# Molding Line



- All Alphaset resin systems
- Silica sand
- 4 full automatic molding lines
- 4 semi-automatic hand molding lines
- 100 molds/hour capacity



# Casting Lines

**65 tones**

**total casting capacity**

Our induction furnaces :

4 x 1 tones

2 x 2,5 tones

2 x 5 tones

2 x 8 tones

2 x 15 tones



# Heat Treatment

A black and white photograph of a large industrial heat treatment furnace in a factory. The furnace is a tall, cylindrical structure with a corrugated metal exterior. It is situated in a large hall with a high, arched ceiling supported by steel beams. In the background, there are other industrial structures, including a large circular fan or wheel. A red semi-circular graphic element is overlaid on the bottom left corner of the image.

Current Capacity :

4 Normalisation & 10 Quenching

Various sizes of electrical normalization, water quenching & tempering furnaces

Future Capacity :

New investments to the heat treatment area in Kavak Factory.

Max. 4500 mm diameter, 30 tones weight for quenching.

Max. 6000 mm diameter, 35 tones weight for normalisation.



# Machining Shop

## Vertical Machining Centers:

2.000 x 1.120 x 1.000 mm  
1.250 x 1.000 x 1.000 mm  
900 x 980 x 800 mm

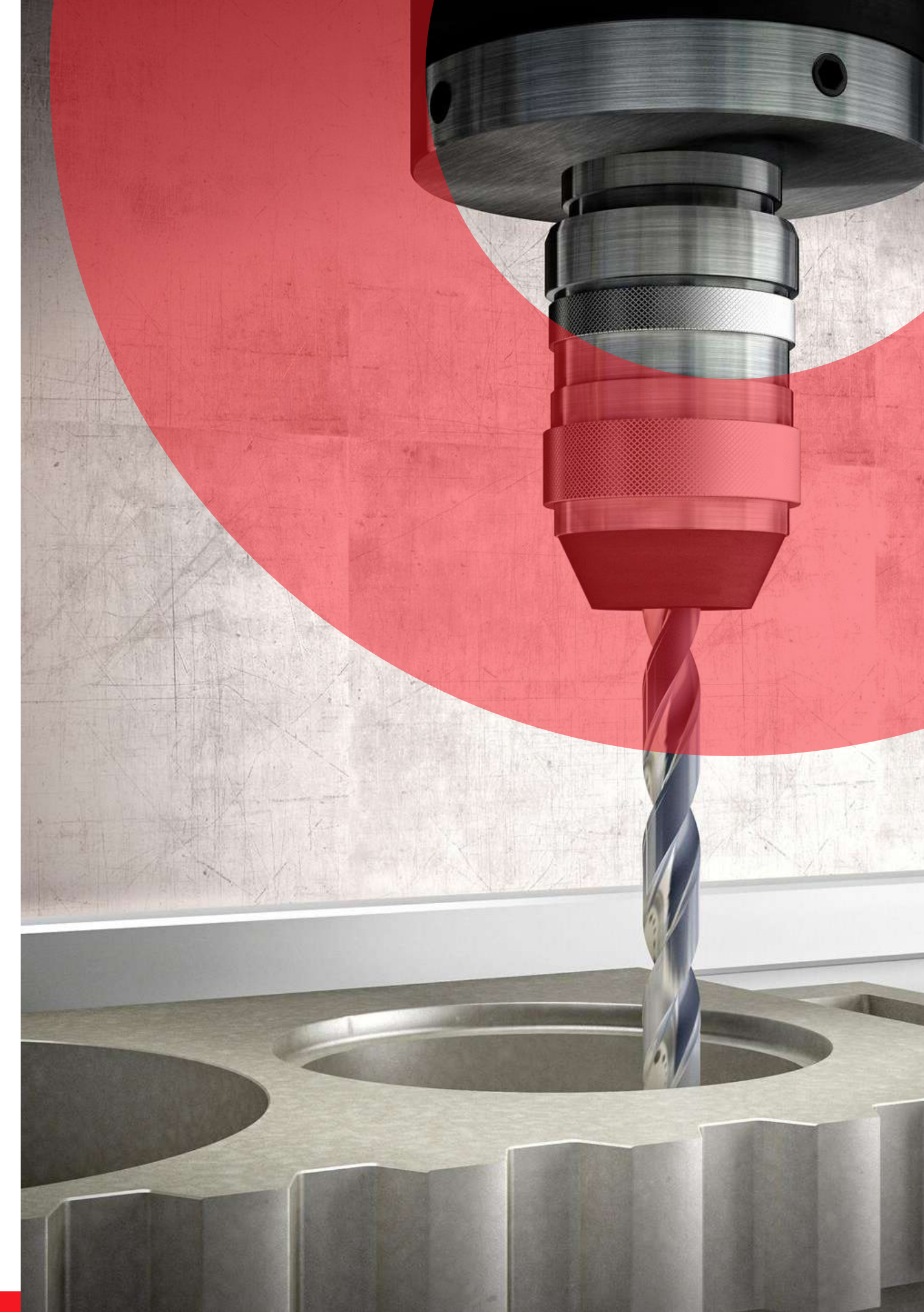
## CNC Lathes:

Ø 4.000 mm, Ø 2.000 mm, Ø 1.200 mm, Ø 900 mm, Ø 600 mm, Ø 700 mm Ø 550 mm

With different specification universal lathers

## Horizontal Machining Centers:

1<8.000 x 6.000 x 1500 mm  
4.000 x 1.650 x 700 mm  
1.800 x 1.320 x 700 mm  
1.200 x 1.120 x 700 mm  
1.520 x 650 x 650 mm  
1.200 x 600 x 600 mm  
1.020 x 550 x 560 mm  
720 x 460 x 510 mm





# Quality Control

- Certified personnel
- Radiography with Co 60
- Ultrasonic Testing
- Magnetic Particle Testing (Fixed & Portable)
- Microstructure Testing (Fixed & Portable)
- Dye Penetrant Testing
- Tensile Strength Device
- Charpy Impact Device
- Hardness Device (HRC, HB, HV)
- Dimension Control with 3D CNC measuring device (Faro ARM and CMM Machine)





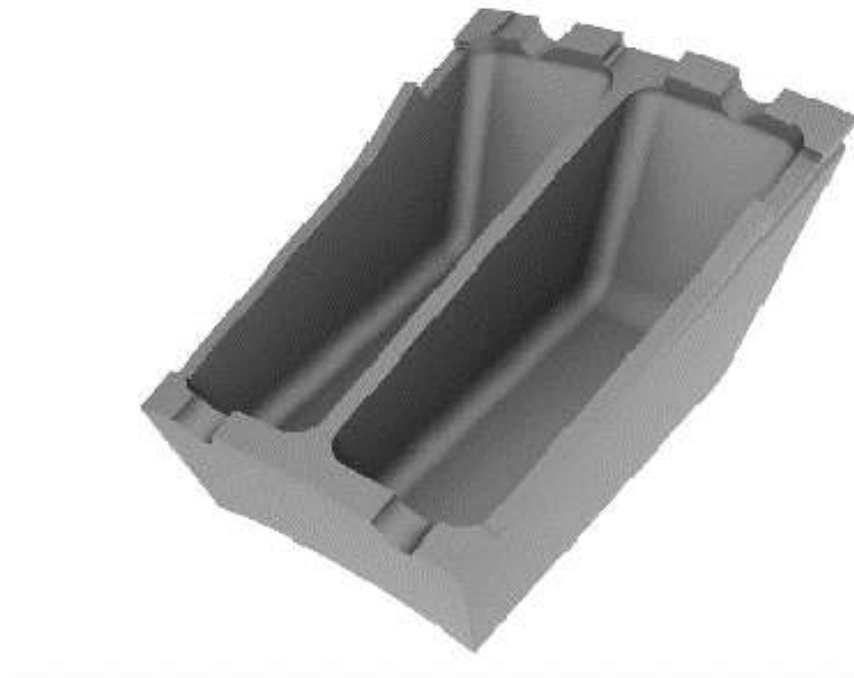


# Industries

As Çelik works with big OEM companies of various industries such as mining, heat treatment, cement, railway, incineration etc.



# Solids of Produced Parts

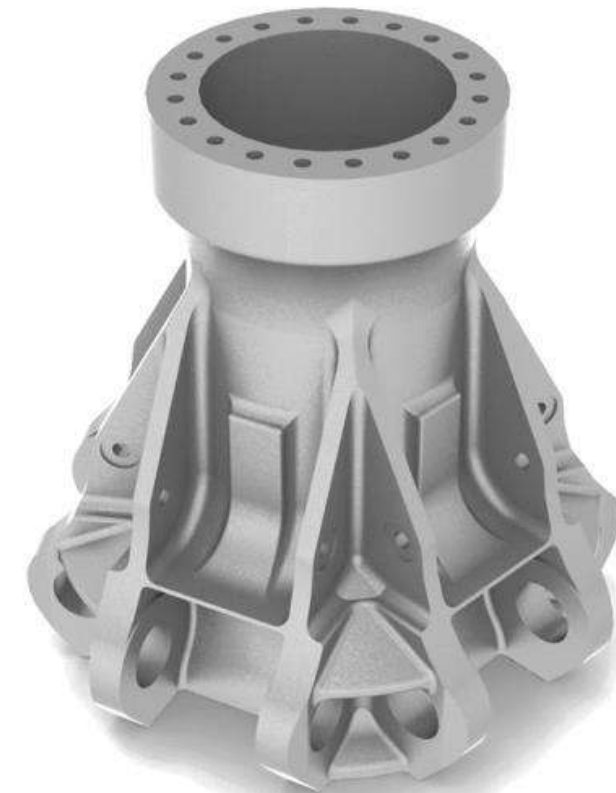
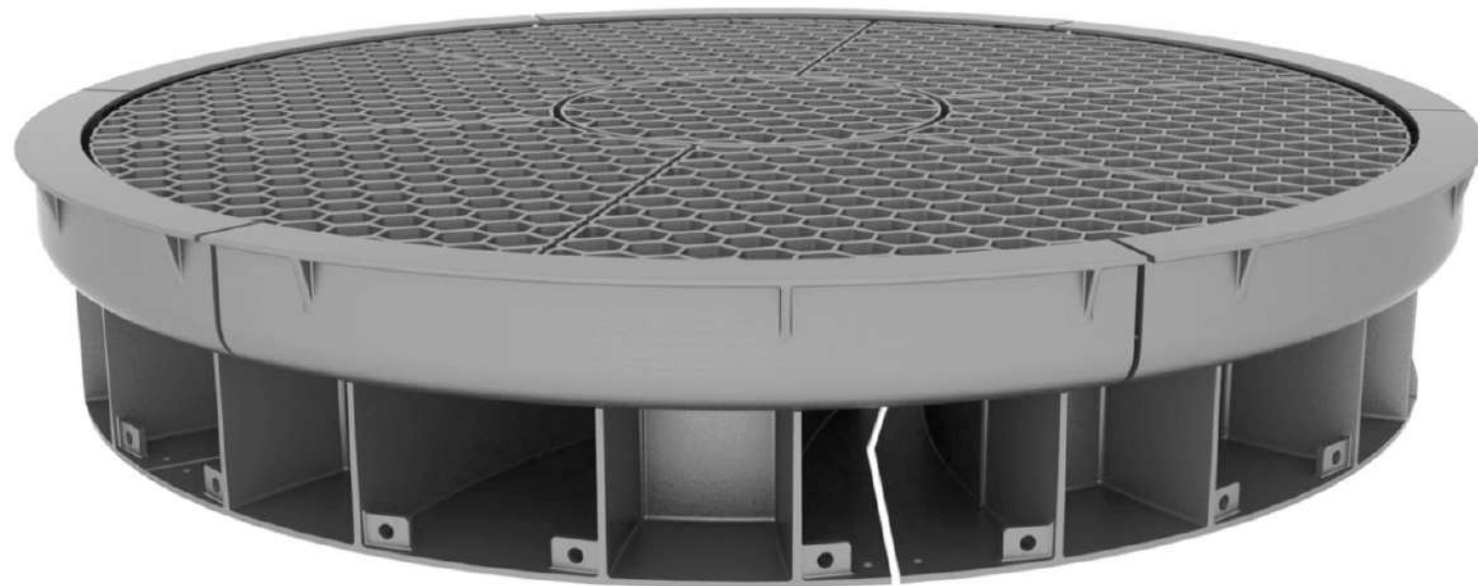
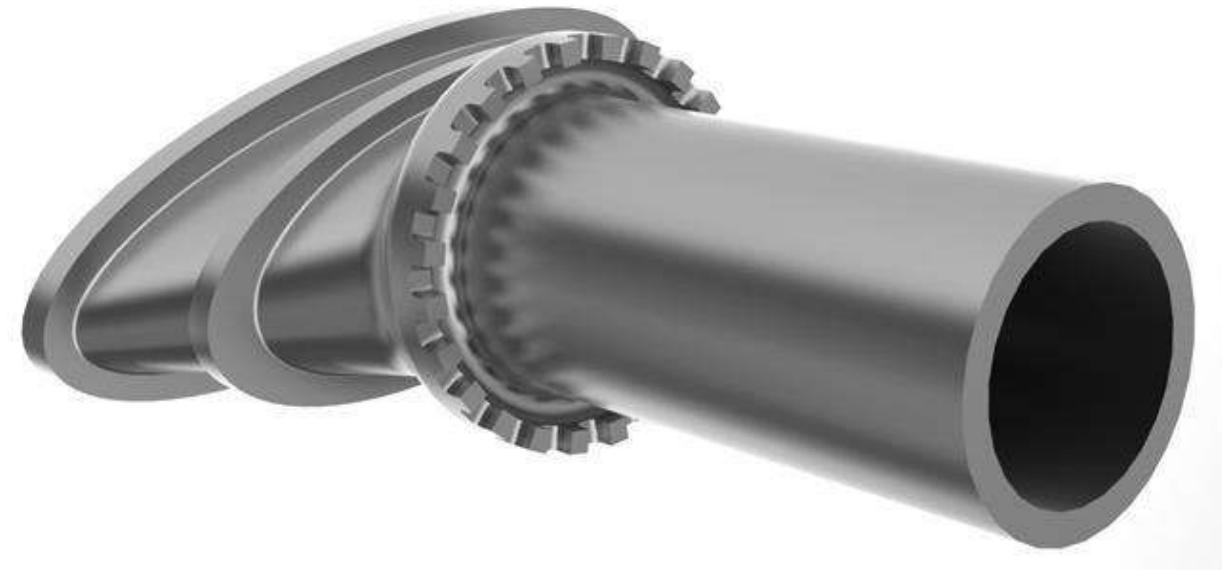


# Solids of Produced Parts

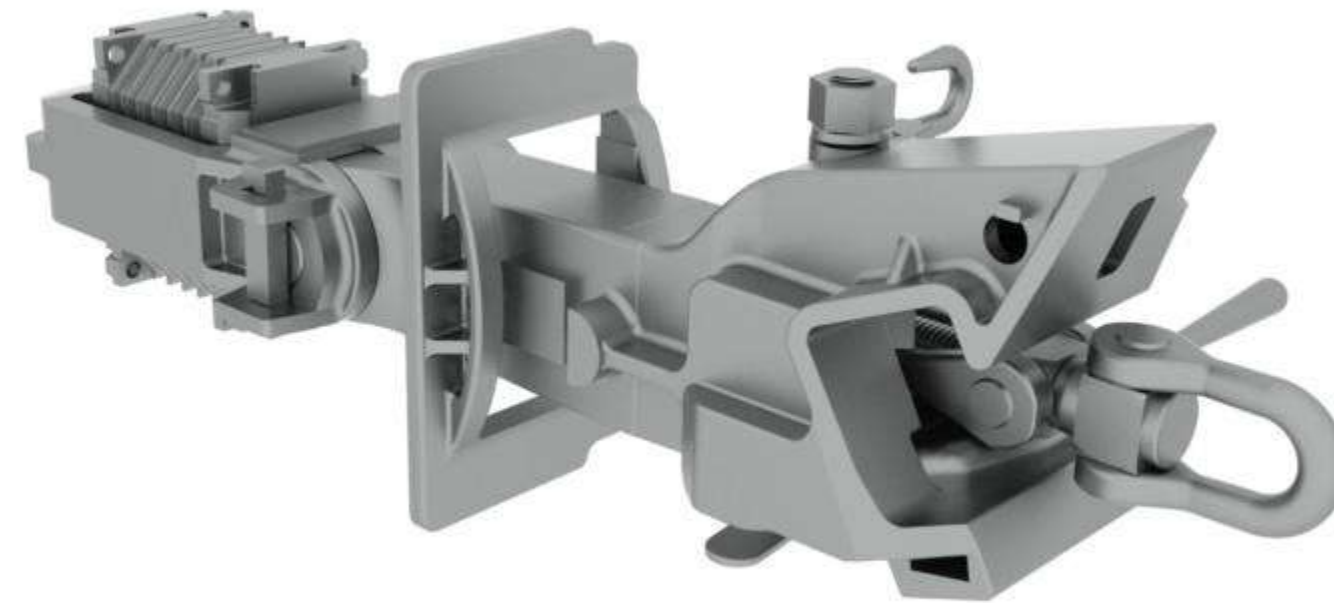
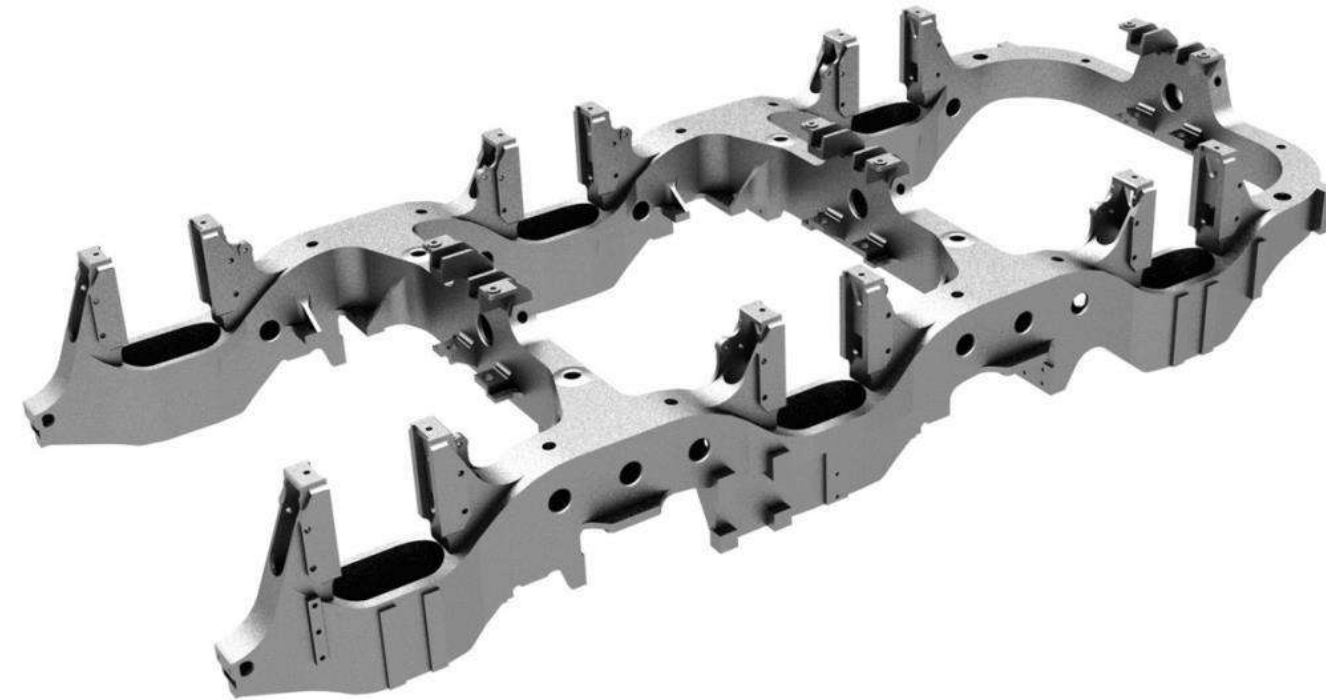




# Solids of Produced Parts

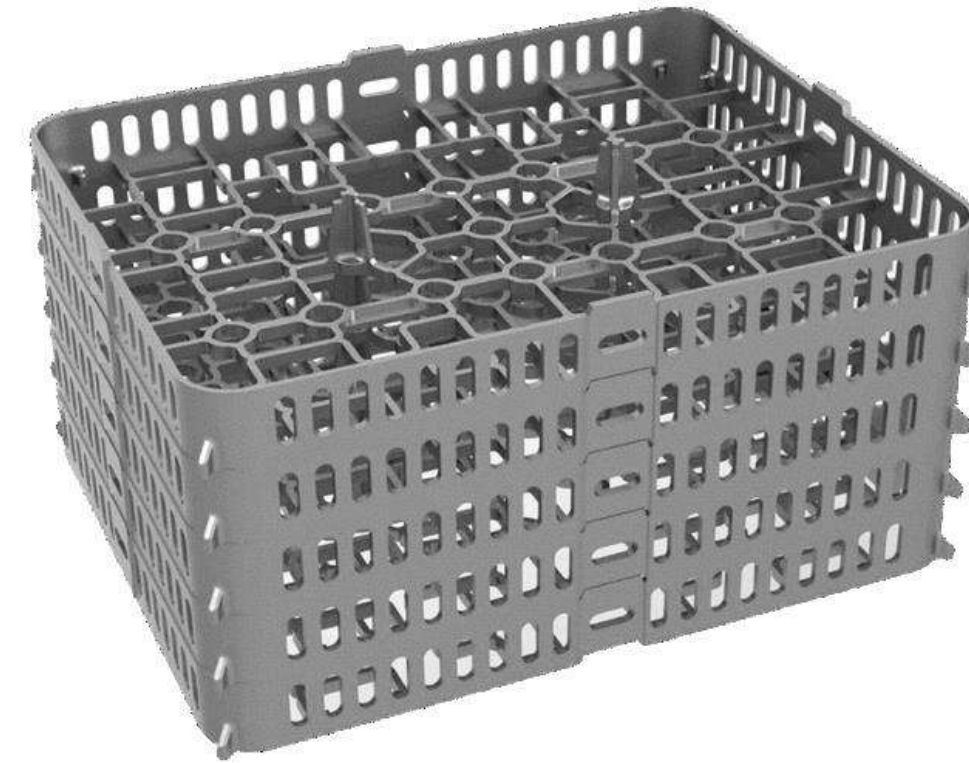
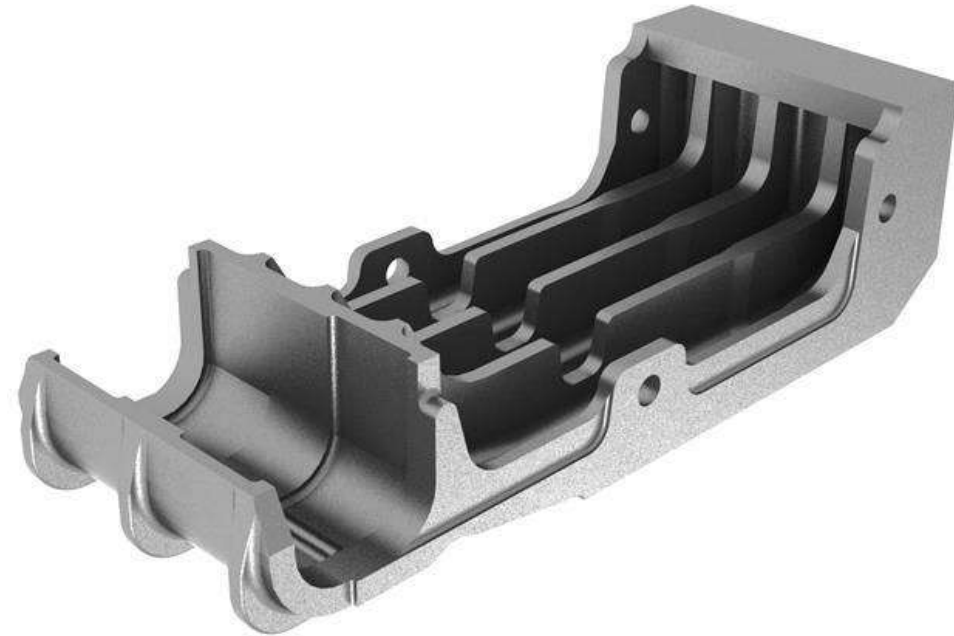


# Solids of Produced Parts





# Solids of Produced Parts







# Investments in Kavak Factory

- 10.000 m<sup>2</sup> covered area is builded as production area in Kavak Factory
- 5000 m<sup>2</sup> area is prepared for the annexe building.
- 35.000 m<sup>2</sup> is floor area is created for next stage of Kavak factory investments.
- R&D Center and Pattern Storage includes 20.000 pieces are planned to established in Kavak.
- As Çelik Academy for training young generations of casting industry.



# Accreditation



## BUREAU VERITAS S.A.

Since 2019, As Çelik is certificated by BV with:

**ISO 9001:2015** Quality Management System

**ISO 14001:2015** Environment Management System

**ISO 45001:2018** OHS Management System



## **Fighting Against Coronavirus**

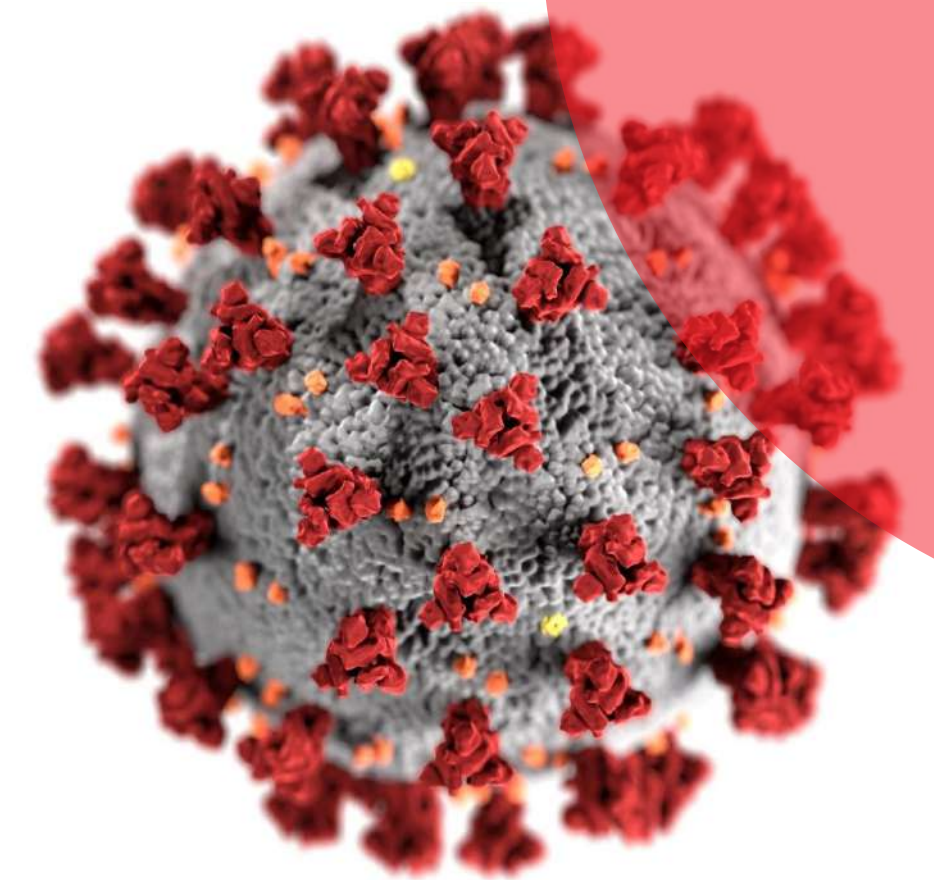
All measures are taken and strictly followed against the Global Covid-19 Pandemic in order to prevent infection.

## **Non-stop Production**

Our operations are never disrupted during the pandemic. The production continued with a fast adaptation to the new conditions and health measures.

## **TSE Covid-19 Safe Production Certificate**

We are certified by internationally recognized Turkish Standards Institutes as Covid-Safe Production Company for 2020 and 2021.



---

# **Covid-19 Precautions**





- As Çelik is very strict about complying all rules and requirement of ISO 45001: 2018.
- Develop O&HS policies, procedures and guidelines according to actual risk assessments.
- Regularly monitor and review the implementation of and compliance with OH&S policies.
- We work with «Zero Occupational Accident» target.
- Non-stop in-company trainings for all staff.

# Occupational Health&Safety



As As Çelik, we accept and undertake to comply with all legal requirements, compliance obligations, and all existing laws and regulations of Turkey in all matters that has the potential to create an environmental impact.

While complying with the laws and regulations, we play a role in the life cycle theory and zero waste studies related to our products, and delicately carry out our activities.

We set our sustainability vision as part of our core business strategy and we plan to actualize this vision with long-term objectives.

We started the process of committing *The Science Based Targets initiative* (SBTi).

As Çelik started the studies for complying the requirements of *European Green Deal Agreement*.

# Environment Approach



# Contact Us



## As elik Döküm İşleme San. ve Tic. A.Ş.

Head Office:

Organize Sanayi Bölgesi,  
Dumlupınar cad. No: 8 55300  
Kutlukent Samsun / TURKEY

Tel: +90 362 266 67 90

[www.ascelik.com](http://www.ascelik.com)

[info@ascelik.com](mailto:info@ascelik.com)

2021 ©

