

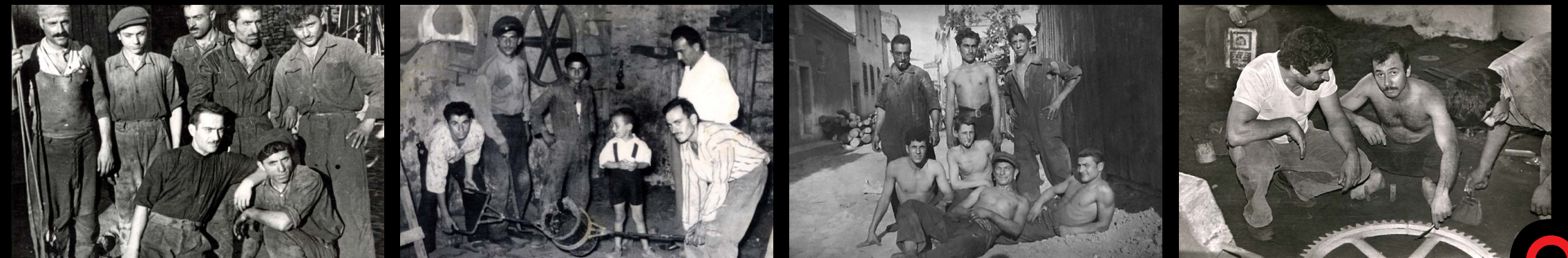


**a**asçelik  
steel casting foundry



MORE THAN  
**60 YEARS**  
OF EXPERIENCE

A family heritage  
for 3 generations





**120.000 m<sup>2</sup> in  
2 LOCATIONS**

450 Workers, 3 Shifts,  
6 Days a Week







**A SINGLE PIECE  
FROM  
1 KG TO 25  
TONES**

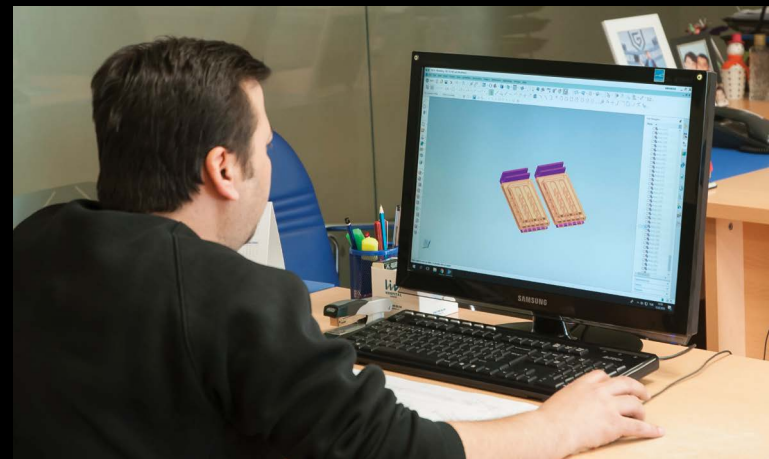
Over 15.000 Patterns in  
Stock with Various Sizes







**WE DO NOT  
OUTSOURCE**



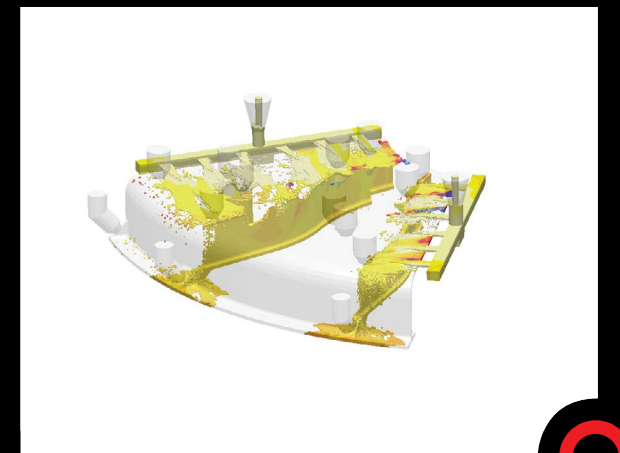
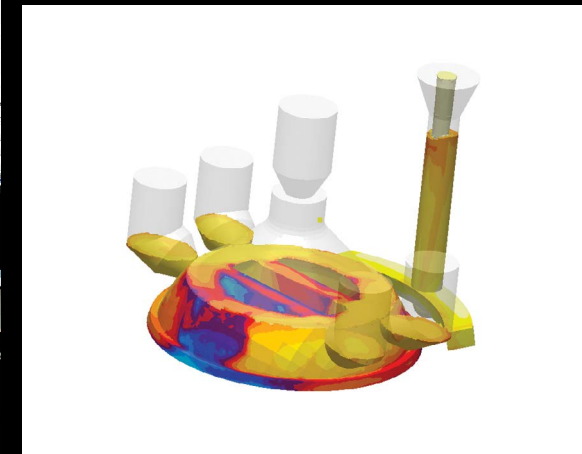
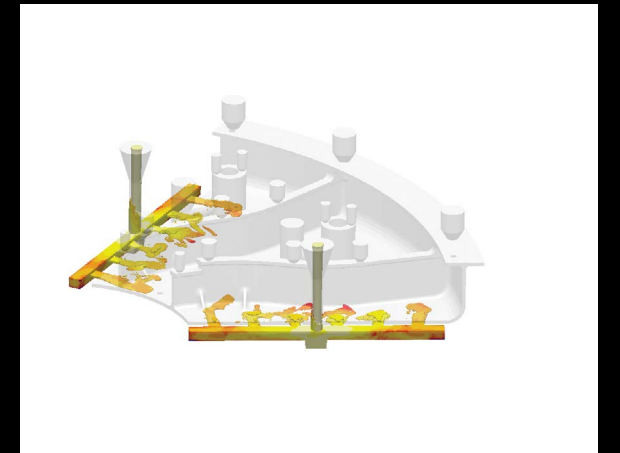
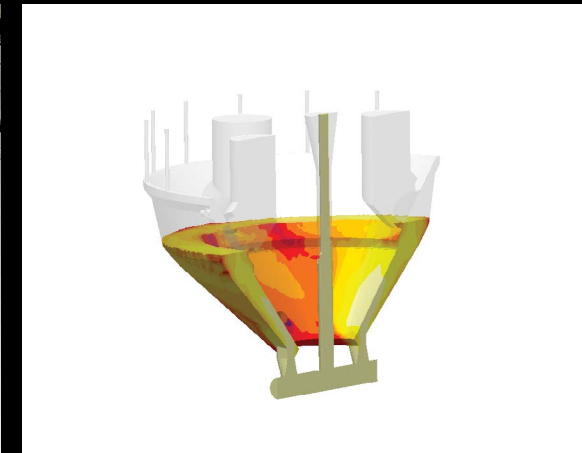
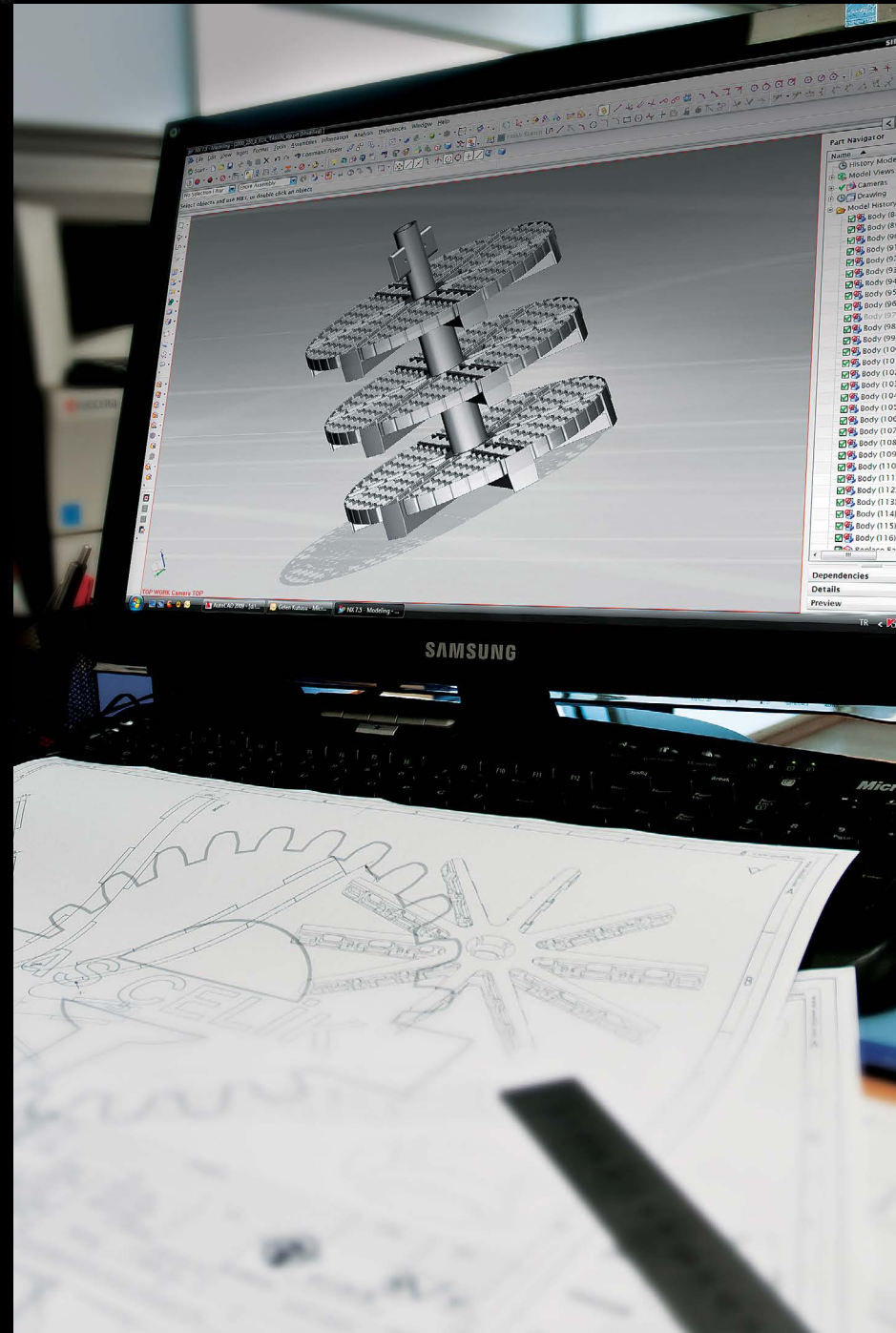
Pattern Manufacturing  
CNC Machining  
Radiographic Testing  
**Everything in House!**





# DESIGN FOR NEED

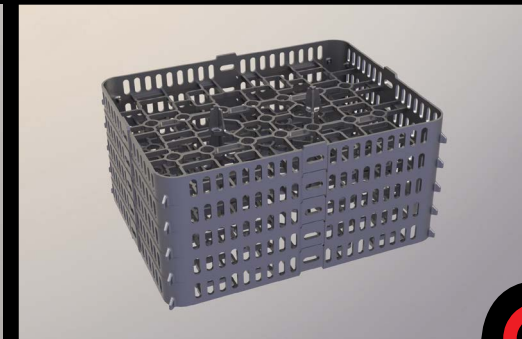
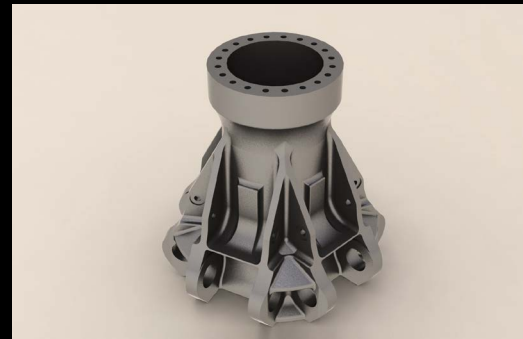
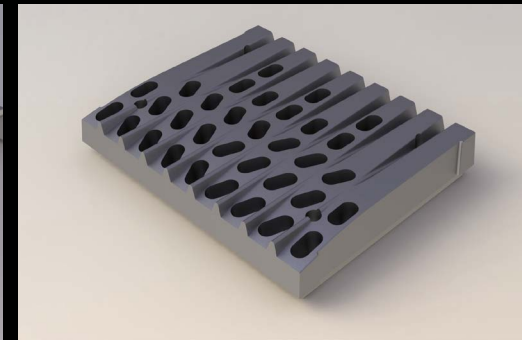
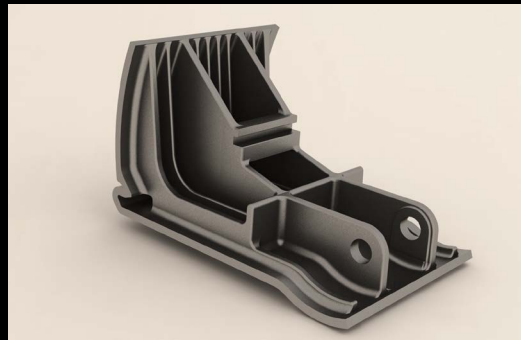
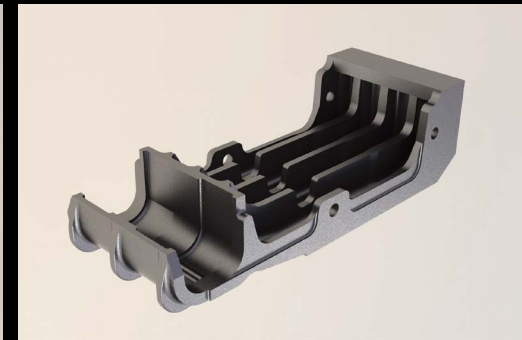
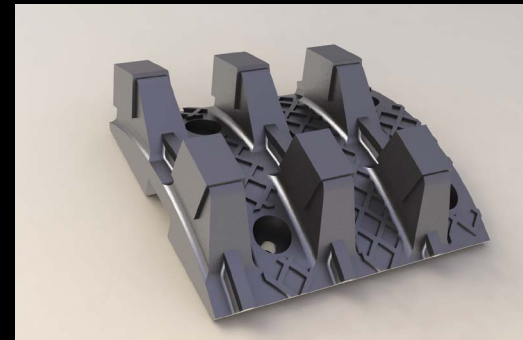
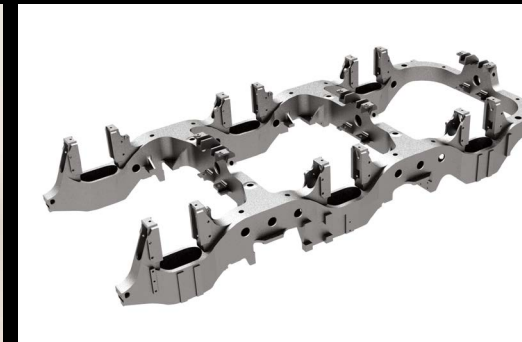
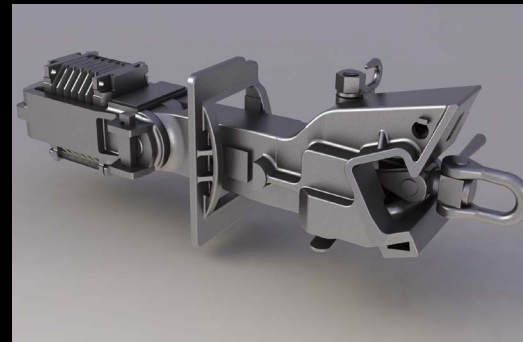
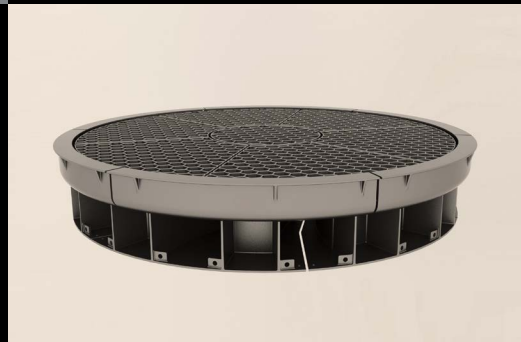
Casting Simulation,  
Material Selection  
and even Complete  
Design from Scratch





OVER 15.000  
**PATTERNS**  
IN STOCK

*Solutions for,*  
Mining, Crushing,  
Cement, Waste Burning,  
Energy, Heat Treatment,  
Railway Industries





**MORE THAN 10  
CONTAINERS  
TO EUROPE  
EVERY WEEK**



O.S.B. SAMSUN/TURKEY

+90 362 266 88 47

+90 362 266 67 46

info@ascelik.com

www.ascelik.com



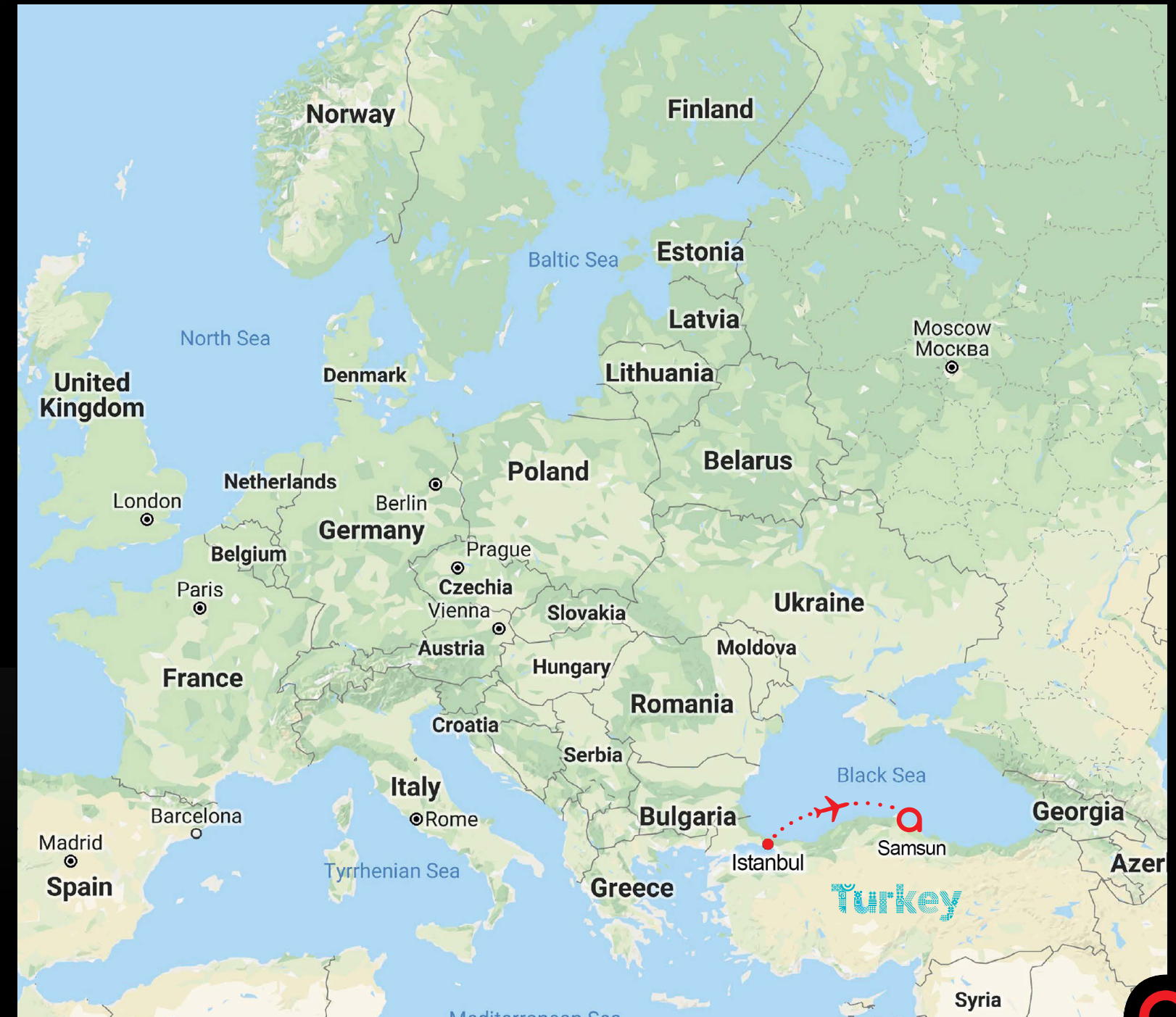
EUROPE IS JUST 1 WEEK  
AWAY BY TRUCK



SAMSUN AIRPORT  
14km



SAMSUN PORT  
13km







[www.ascelik.com](http://www.ascelik.com)